



4-CH AHD Camera (optional)

4 x AHD 720P Camera inputs, real-time monitoring, and video recording



High brightness

800 nits higher brightness display readable in the sunlight condition and outdoor environment



ISO 7637-II

ISO7637-II standard transient voltage protection, withstand up to 174V300ms car surge impact DC9-36V Wide voltage power supply design



CAN BUS (optional)

CAN Bus interface with CAN 2.0B protocol provide a standard bus for automotive computer control systems and embedded industrial control local area networks



DMS & ADAS (optional)

Driver Monitoring System and Advanced Driver Assistance Systems make driving safer



Real-time precision tracking

Dual-satellite system running GPS + GLONASS Integrated 4G LTE for round-the-clock connectivity



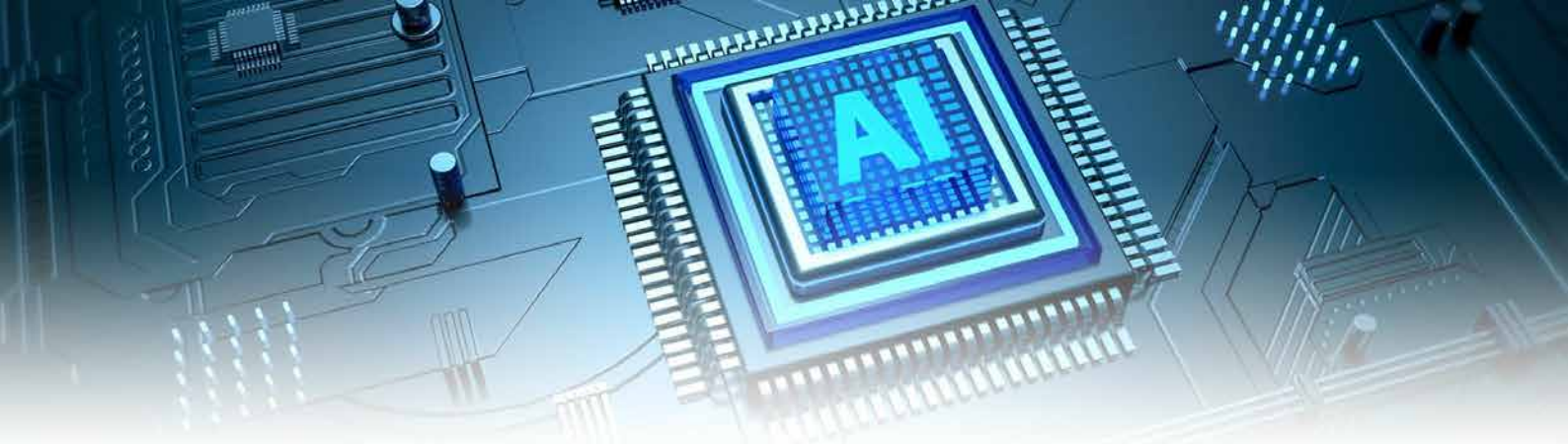
All-round ruggedness

Comply with IP67 rating
1.2 meters drop resistance
Anti-vibration & shock standard by US Military MIL-STD-810G



ELD made easy (optional)

SAEJ1939/OBD-II interfaces, recording ECM data automatically Compliant with multiple HOS rules(FMCSA) including Property/Passenger 60-hour/7-day & 70-hour/8-day



ADAS: Advanced Driving Assisting System.

The ADAS with a high dynamic range camera and specialized algorithm, which can sense the vehicle's surroundings and transform road conditions into voice reminders and alarms in advance, so that drivers can take proactive actions in time and reduce potential risks occurred on the road.



Lane Departure Warning



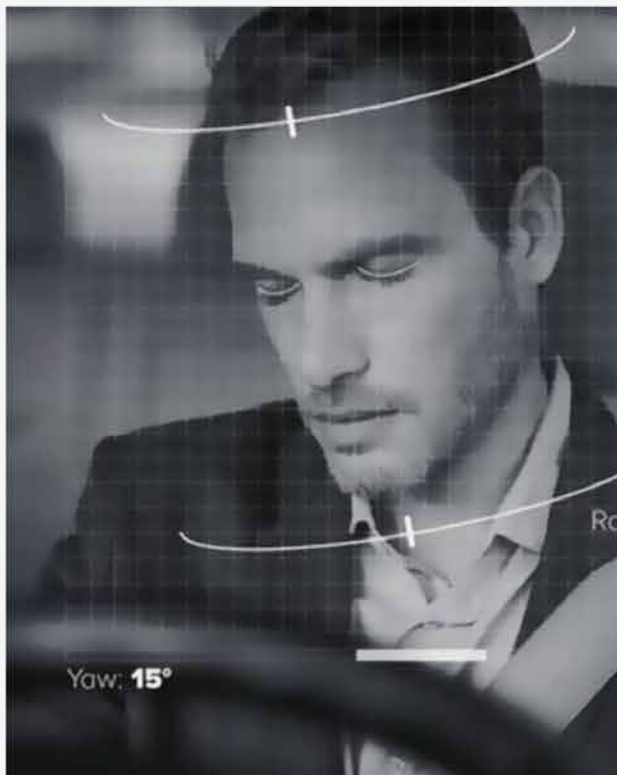
Forward Collision Warning



Headway Monitoring Warning

DMS: Driver Monitoring System.

Based on professional AI algorithm software, the DMS can monitor improper driving behaviors to ensure safety driving, like fatigue, distraction, smoking, yawn, etc.



Driver ID Management



Fatigue Warning



Yawning Warning



Camera Block Warning



Mouth Block Warning



Smoking Warning



Distraction Warning



Calling Warning

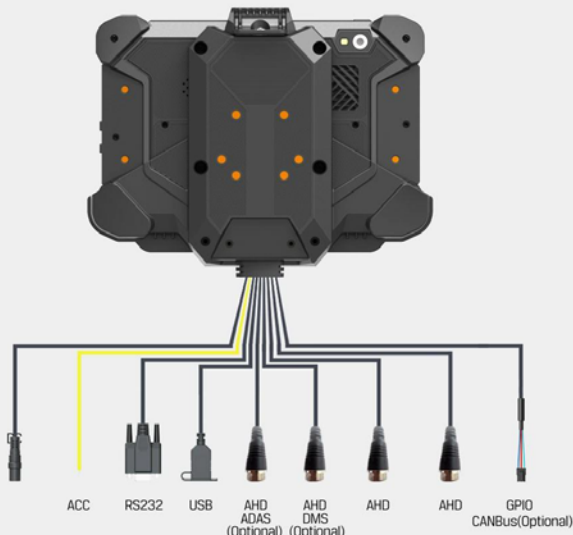


Driver Abnormality

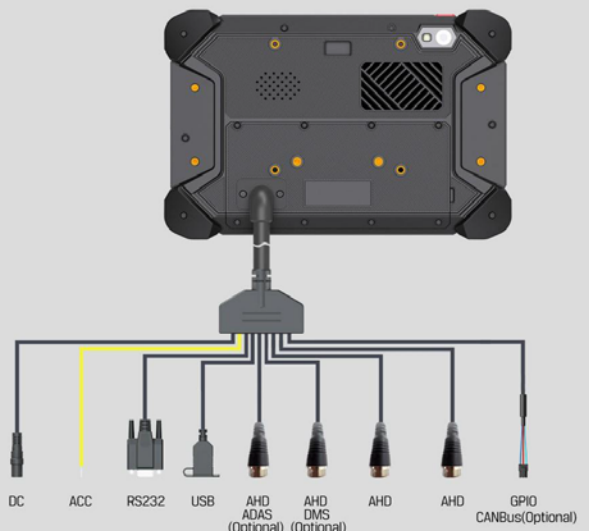
SPECIFICATIONS

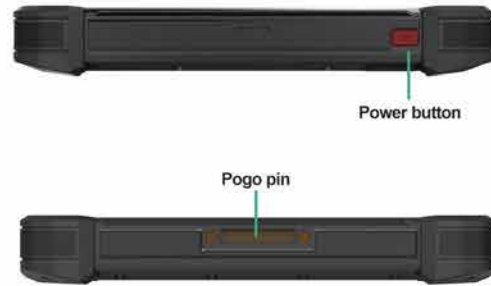
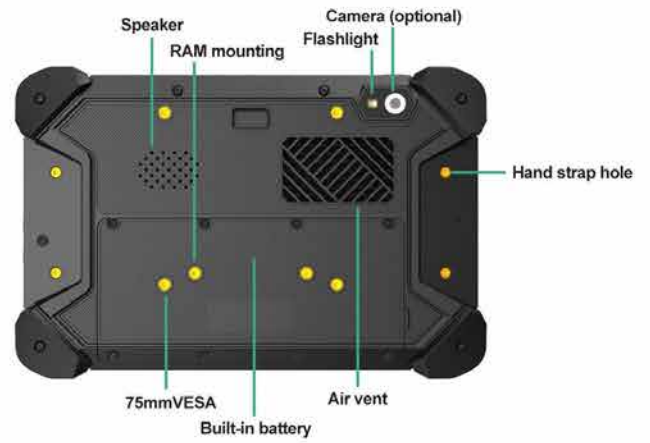
| | | | |
|-----------------------------|---|--|--------------------------------|
| System | CPU | Qualcomm Cortex-A53 64-bit Octa-core Processor, 1.8GHz | |
| | GPU | Adreno 506 | |
| | Operating System | Android 9.0 | |
| Storage | RAM | 2 GB LPDDR3 / 4GB (optional) | |
| | Flash | 16 GB eMMC / 64GB (optional) | |
| | Storage Expansion | Maximum Support Micro SD 512GB | |
| Display | LCD | 7 inch HD (1280 x 800), 800cd/m ² Sunlight readable | |
| | Touchscreen | Multi touch capacitive touchscreen | |
| Digital camera | Camera (optional) | Rear:16 MP | |
| Communication | Bluetooth | BLE 4.2 | |
| | WiFi | IEEE 802.11 a/b/g/n/ac; 2.4GHz/5GHz | |
| | 2G/3G/4G | LTE, HSPA+, UMTS, EDGE, GPRS, GSM (Data and Voice) | |
| | GNSS | GPS/GLONASS | |
| | NFC (optional) | Read/Write Mode:ISO/IEC 14443 A&B up to 848 kbit/s, FeliCa at 212 &424 kbit/s, MIFARE 1K,4K,NFC Forum type 1,2,3,4,5 tags,ISO/IEC 15693 All peer-to-peer modes Card Emulation Mode(from host):NFC Forum T4T (ISO/IEC 14443 A&B) at 106 kbit/s;T3T FeliCa | |
| AHD Video input | Video input | 4 x 720P AHD Independent input 1.0Vp-p, 75Ω | |
| | Video standard format | PAL format: 25 frames per second; NTSC format: 30 frames per second | |
| AI Solution (optional) | ADAS (NEW) | Lane departure, Forward collision, Headway monitoring | |
| | DMS (NEW) | Driver ID Management, Driver Abnormality; Fatigue, Yawning, Camera Block, Mouth Block, Smoking, Distraction, Calling etc. | |
| Audio | Built-in microphone | x1 | |
| | Audio output | Built-in 2W speaker | |
| Video and audio compression | Video encoding format | H.265/H.264 | |
| | Video format | TS/MP4 | |
| | Image format (choose 1 of 2) | PAL: 4 x 720P NTSC: 4 x 720P | |
| | Dual stream | Support Dual stream | |
| | Video bit rate | 192Kbps-4096Kbps (Per channel) | |
| Interface | Type-C | Compliant with USB 3.0 (for charging and data transfer; support OTG) | |
| | Docking connector | POGO PIN x24 | |
| | Headphones and microphones (four-stage) | x1 | |
| Sensor | Gyroscope, Accelerometer, Light sensor, Compass | | |
| Power supply | DC input | DC9-36V (ISO 7637-II compliant) | |
| | Battery | 3.7V,5000mAh Li-ion (Replaceable) (not for All-in-one cable version) | |
| Physical Dimensions (WxDxH) | 200x130x28.5mm | | |
| Weight | 815g | | |
| Environmental reliability | Drop test | 120cm | |
| | Vibration test | MIL-STD-810G | |
| | Dustproof and waterproof | IP67 | |
| | Operating temperature | -10° C ~ 65° C (14°F-149°F) 0° C ~ 55° C(32°F-131°F) (Charging) | |
| | Storage temperature | -20° C ~70° C | |
| Extended interfaces | Connection | Docking Station (option A) | All in one Cable (option B) |
| | USB2.0 (Type-A) | x1 | x1 |
| | RS232 | x1 | x1 |
| | AHD (support ADAS, DMS) | x4(with 12V power output each) | x4(with 12V power output each) |
| | ACC | x1 | x1 |
| | Power | x1(9-36V) | x1(9-36V) |
| | GPIO | x2 | x2 |
| | CANBUS | x1(Optional) | x1(Optional) |

Docking Station (option A)



All in one Cable (option B)





Accessories



- Allen wrench
- Screws for RAM
- SIM card plug

Standard



USB to Type-C cable



Side View AHD Camera
AHD-720S



Rear View AHD Camera
AHD-720R



ADAS Camera
AHD-1080ADAS



DMS Camera
AHD-720DMS



Video Cable



Power adaptor

Optional

All technical data, specifications and performance figures subject to change without prior notice.

BizTech Distribution GmbH | www.biztech-distribution.eu
Phone: +49 30 220121411 | E-Mail: contact@biztech-distribution.eu

biz/TECH
distribution

NB20230404